



Genie Aladdin Connect – OHD Anywhere Crestron Home Application Guide

Description

This Driver provides control over garage doors using the [Genie Aladdin Connect service](#). Genie and Overhead Door openers that support Aladdin Connect or OHD Anywhere may be controlled. Additionally, other manufacturers' garage doors openers may be controlled when connected to a [Genie Aladdin Connect Wi-Fi RetroFit Kit](#) or a [OHD Anywhere retrofit kit](#).

This Driver provides a wide variety of functionality for control of and status feedback from the online service

- Open/Close control of a Genie or Overhead Door opener that natively supports Aladdin Connect or OHD Anywhere (single door control).
- Open/Close control of up to 3 doors when using the retrofit kits(using multiple drivers).
- Unsolicited and real-time feedback of door status.
- Door sensor battery level feedback for Retrofit kits(on Extension UI only).
- Fault Status.

Supported Processors

This Driver is supported in a Crestron Home processor running Crestron Home OS version 4.005.0285 or later. This Driver is not supported in SIMPL Windows. For the SIMPL Windows version of this driver, please visit <https://store.controlworks.com/products/Genie-SIMPL-Windows>.

Previous Versions

Version 4.0.0 is a complete re-write of the Crestron Home features, implementing native door control. If you are upgrading from previous versions of the driver, remove all previous instances, then download the update and install the Driver. No changes to the pairings or licenses will be required.

Contents

Description	1
Supported Processors	1
Previous Versions	1
Contents	2
Module Instance License	3
Steps for Purchasing a License	3
License Changes.....	3
Adding the Driver to a Crestron Home System	4
User Interface Overview.....	8
Access Tile.....	8
Extension User Interface	10
Home Tile.....	10
Main Page.....	10
Sequences and Quick Actions.....	11
Quick Actions	11
Events	11
Module Application	12
Network Requirements.....	12
Multiple Crestron Home Processors and multiple Genie Accounts	12
Polling and Status Updates	12
Faults	12
Support	13
Distribution Package Contents	13
Revision History	14
Development Environment	14
ControlWorks Consulting, LLC Type 5 Module/Driver License Agreement	15

Module Instance License

This Driver requires a Module Instance License, which can be obtained by following the steps in the section [Adding the Driver](#) to a Crestron Home System.

Each Device you are controlling requires a separate license. A "Device" refers to either an opener with Genie Aladdin Connect/OHD Anywhere built-in or a Retrofit Kit.

The number of doors a device can control varies. For example:

- An opener with Genie Aladdin Connect/OHD Anywhere built-in is a device that controls a single door and requires one license.
- A Retrofit Kit (with Genie Aladdin Connect/OHD Anywhere built in) is a device that can control up to 3 doors and requires one license.

Steps for Purchasing a License

Licenses are associated with the Crestron Processor. The steps below outline how to purchase a License and pair the Driver.

- At any time, if you know the processors MAC address, you may purchase Licenses. The steps below in [Adding the Driver to a Crestron Home System](#) describe the process of adding Doors and purchasing the License.

License Changes

If a Crestron Processor is replaced the license will need to be transferred and pairings (see [Add Pairings](#)) will need to be recreated. We offer one license transfer at no charge; subsequent transfers of the same license will incur a small administrative fee.

Adding the Driver to a Crestron Home System

Note: These instructions and screenshots have been prepared based on CP4-R Crestron Home version 4.005.0285. Future updates to Crestron Home may result in changes to the appearance or the steps required to implement the Driver.

1. Ensure the Retrofit Kit, or Opener is installed and is functional in the Genie Aladdin Connect or OHD Anywhere app. **The door must be controllable using the Genie Aladdin Connect or OHD Anywhere app before any setup can occur.**
2. Ensure your Crestron processor is connected to the network, and is able to reach the Internet. Internet access at all times is required for Driver operation. For additional details on network requirements, please see [Network Requirements](#).
3. Add the Driver to Crestron Home - Open the Crestron Home Setup XPanel or Mobile App, navigate to the Drivers by pressing Menu > Settings > Configure System > Pair Devices > Drivers.

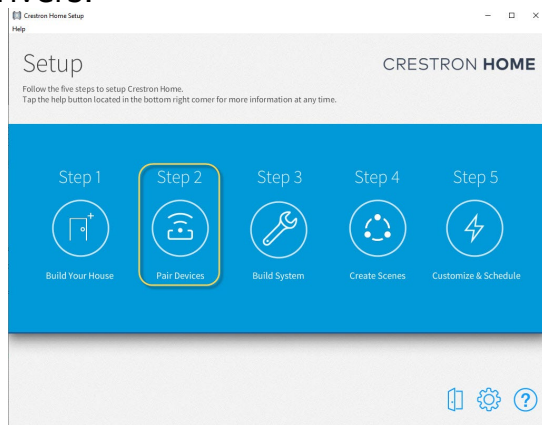


Figure 1 - Pair Devices

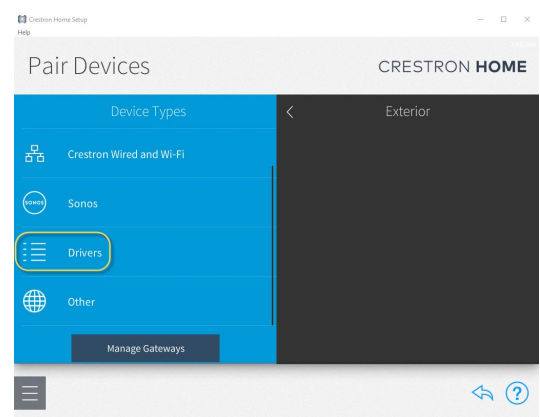


Figure 2 - Drivers

4. After Crestron Home refreshes the Driver list, scroll the list of Drivers to locate and select the Platform category, then select "Genie Aladdin Connect - OHD Anywhere".

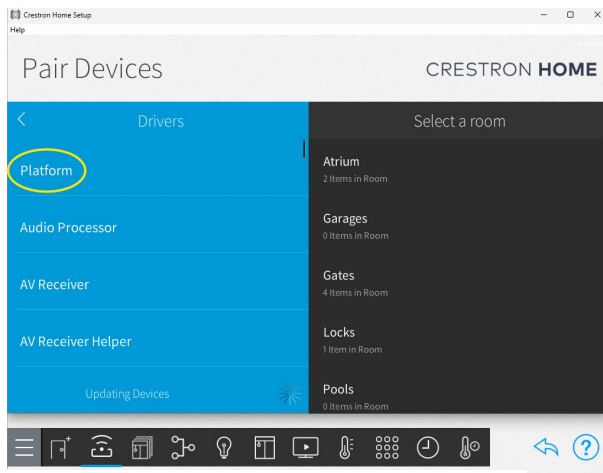


Figure 3 Locating Platform

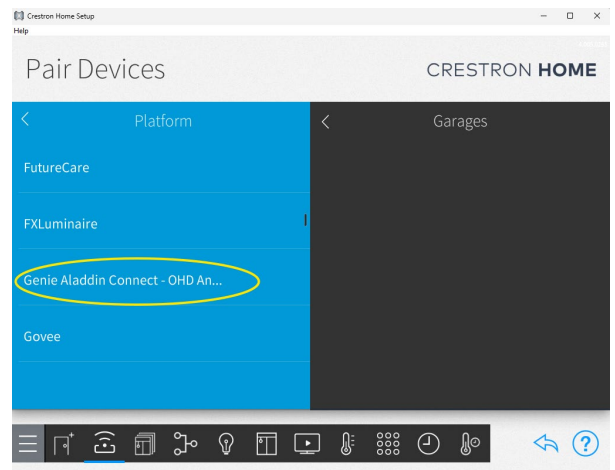


Figure 4 – Genie Aladdin Connect - OHD Anywhere

5. Select the + button to add the Genie Aladdin Connect or OHD Anywhere driver. There is no difference between the two options.

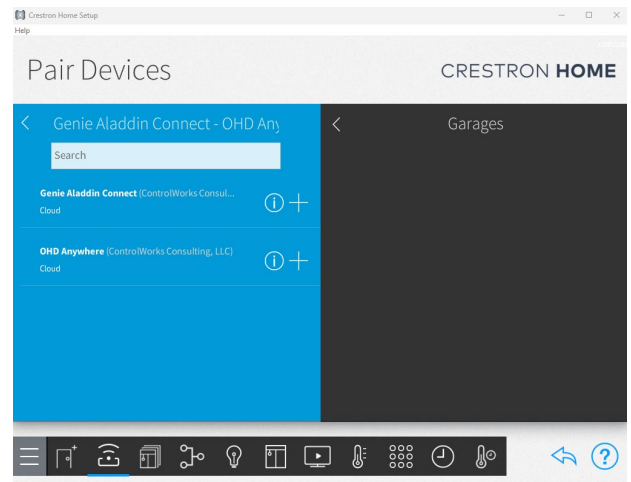
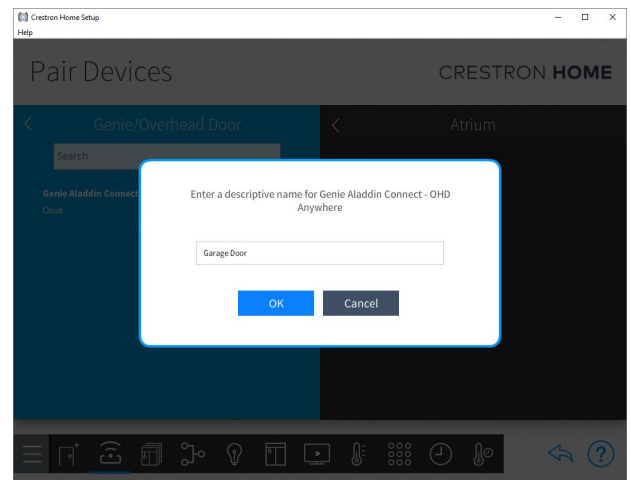


Figure 5 - Add Driver

6. Enter a name of your choosing for the Platform Driver. Then Press OK.



7. Next the Driver will ask about installation items:

- i) Show On Room Page and Show On Home Page : These are used to display the Extension Tile on the Home Page or Room Page. By default, only the Show On Home Page is checked. Leave this checked until the setup is complete and the Driver is operating properly.
 - ii) License URL: This URL links to the licensing page. One or more licenses must be purchased for the driver to operate. This will be used in the next step.
 - iii) Pairing URL: This URL will be populated after the installation is completed. This will be used in the next step.
- b) Press Next to complete the installation settings.

8. Purchase Licenses.

- 1) Open the Platform Driver installation settings.
- 2) In the Crestron Home Setup tool:
- 3) Navigate to Pair Devices
- 4) Select the room where you added the platform
- 5) Locate the Platform Driver (this will have the same name configured in Step 6 previously) and select the Gear Icon.
- 6) Select "Installer Settings".
- 7) Locate the "License URL" field and click the link.
 - a) This link contains a URL to the ControlWorks store including the processor's correct MAC address. When clicked, a browser will open the license page and automatically populate the necessary information in the MAC address field.
 - b) Each Aladdan Connect or OHD Anywhere device you are controlling requires a separate license. The number of doors a device can control varies, for example:
 - i) An opener with Genie Aladdin Connect/OHD Anywhere built-in is a device that controls a single door and requires one license.
 - ii) A Retrofit Kit (with Genie Aladdin Connect/OHD Anywhere built in) is a device that can control up to 3 doors and requires one license.
- 8) Complete the license purchase.
 - a) If additional licenses are needed after purchase, additional licenses can be purchased at a later time.

9. Add Pairings.

- 1) In the Crestron Home Setup tool:
- 2) Navigate to Pair Devices
- 3) Select the room you added the platform
- 4) Locate the Platform Driver using the name entered in Step 6 and select the Gear Icon.
- 5) Select Installer Settings.
- 6) Locate the "Pairing URL" Link.
 - a) This link contains the Processor's unique pairing URL.
- 7) Click on the link, and the pairing site will be loaded in a browser.
 - a) Follow the steps on the pairing site to authenticate your Crestron processor to the Genie Aladdin Connect Service.
 - b) Once authenticated with the Genie Service, starting at Module 0, select the device to be paired with the driver using the drop-down boxes.

- c) Select Save Pairings.
 - i) Note at the top of the page is the quantity of licenses this Processor has available. If more devices are paired than there are licenses available, the unlicensed devices will not be accessible in Crestron Home.

STEP 1 - PROCESSOR PAIRING [COMPLETE]

LICENSING INFORMATION
This processor is currently licensed for 5 instances. If you pair more than 5 instances additional instances will not function until a license is purchased for them at <https://store.controlworks.com/>.

STEP 2 - MANUFACTURER ACCOUNT PAIRING [COMPLETE]

STEP 3 - MODULE ASSOCIATION

You have successfully linked your Genie Aladdin Connect/OHD Anywhere account with this processor. Please select a device to be associated with each module below:

Module #0 uses Interface:	0035FF (ID: 0035FF)	with door(s): 1-Churro Chamber Left 2-Churro Chamber Center 3-Churro Chamber Right
Module #1 uses Interface:	0035FF (ID: 0035FF)	with door(s): 1-Pizza Portal Left 3-Pizza Portal Right
Module #2 uses Interface:	0035FF (ID: 0035FF)	with door(s): 1-Quiche Quarters Left 3-Quiche Quarters Right
Module #3 uses Interface:	(None)	
Module #4 uses Interface:	(None)	
Module #5 uses Interface:	(None)	
Module #6 uses Interface:	(None)	
Module #7 uses Interface:	(None)	
Module #8 uses Interface:	(None)	
Module #9 uses Interface:	(None)	

Save Pairing

Figure 7 - Pairing Example

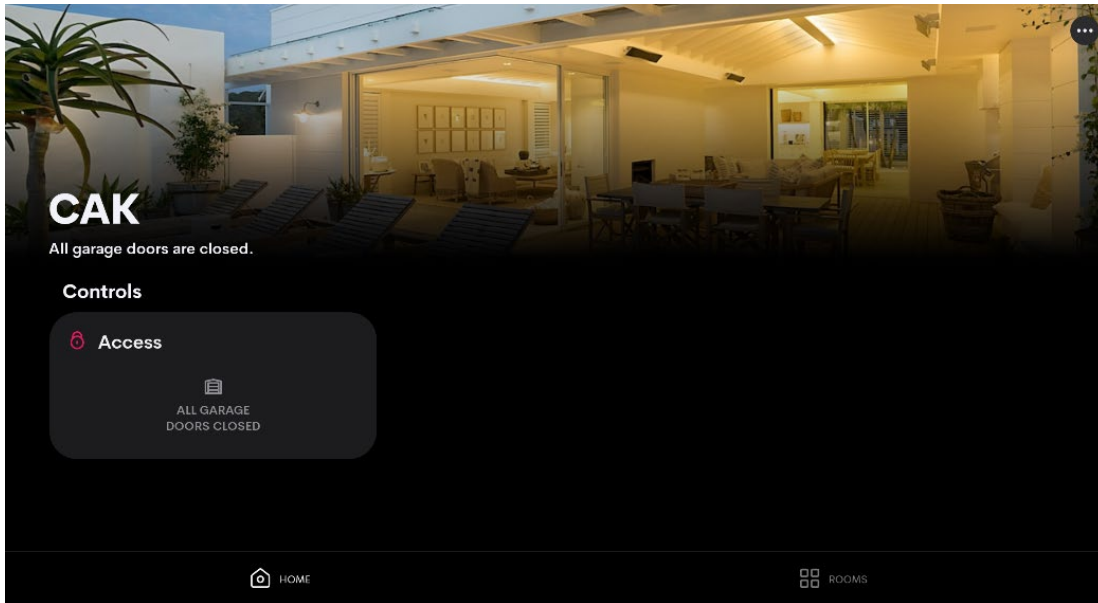
10. Add the License Helper driver and refresh the license.
 - 1) In the Crestron Home Setup tool:
 - a) Navigate to Pair Devices
 - b) Select Managed Platforms
 - c) Locate the Platform Folder using the name entered in Step 6 and select the Folder.
 - d) Locate the "ControlWorks Genie License Helper" and select the + icon to add the License Helper Driver.
 - e) On the customer touch panel, select the License Helper.
 - f) Touch the "Update License Information" button.
 - g) The Driver will automatically add the paired *and* licensed doors to the system.
11. Add the Doors to a Room.
 - 1) In the Crestron Home Setup tool:
 - a) Navigate to Pair Devices
 - b) Select Managed Platforms
 - 2) Locate the Platform Folder using the name entered in Step 6 and select the Folder. Once added, the door will be controllable through the Access portion of Crestron Home, as well as via the Extension Tile.
12. Once the doors have been added to a room, if desired, you may hide the License Helper tile and Door Extension tiles.
 - 1) Open the Platform Driver installation settings.

User Interface Overview

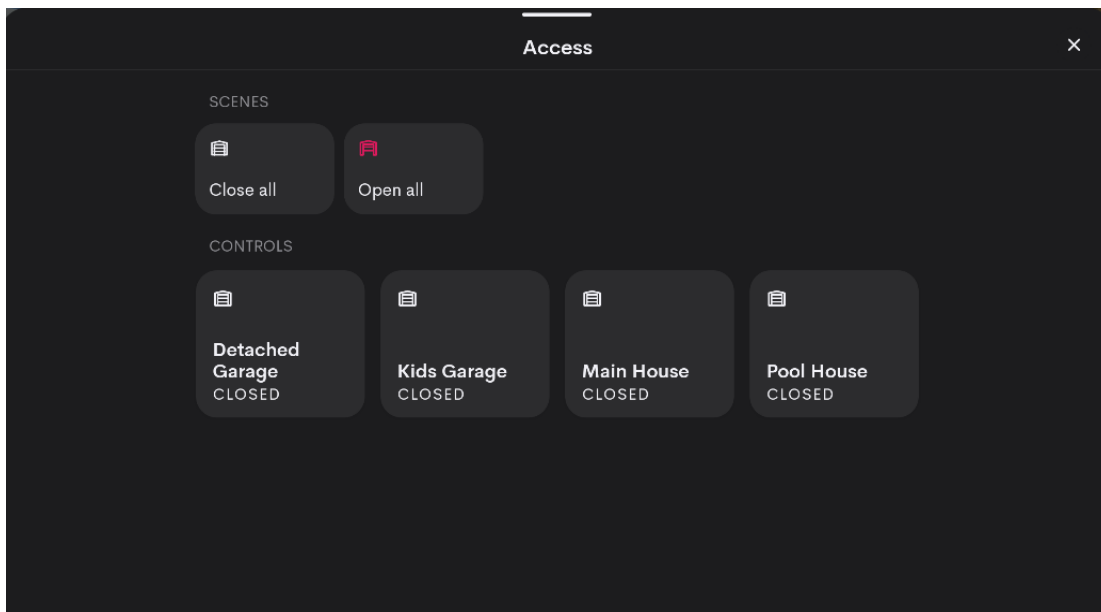
This section describes the general operation of the customer facing user interface; however, the exact configuration and display of the Driver is dependent on factors such as the size of the user interface being used and number of Doors present on a Device.

Access Tile

This tile is added by Crestron Home, and displays all Garage Doors added in the System. If the Room containing the garage door driver is hidden, the garage door will not be visible in the access controls section of the user interface.

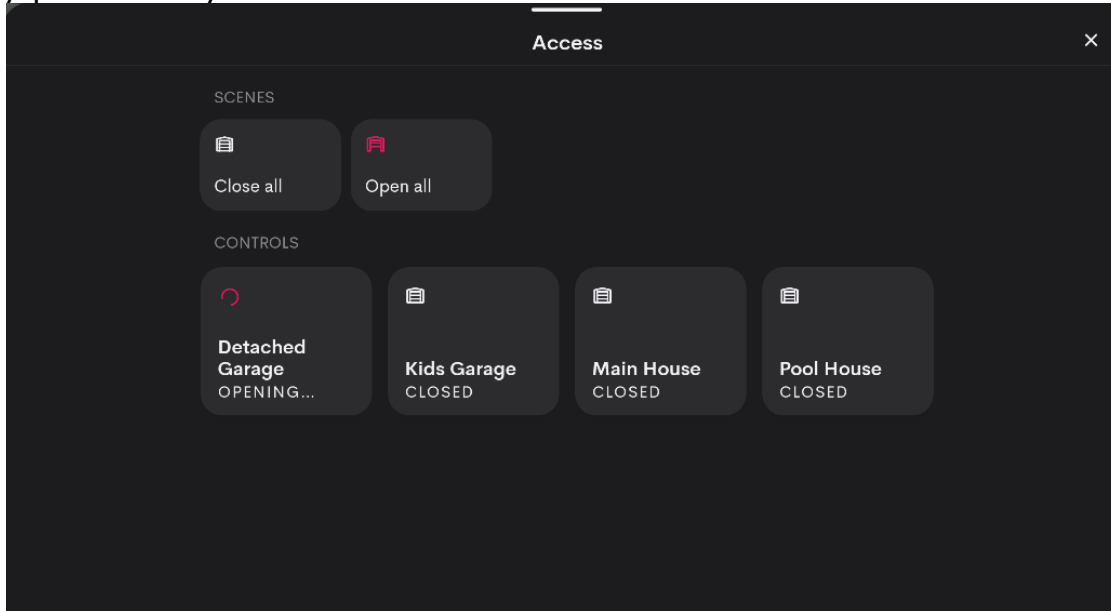


Selecting Access displays the Doors that have been added to the System.

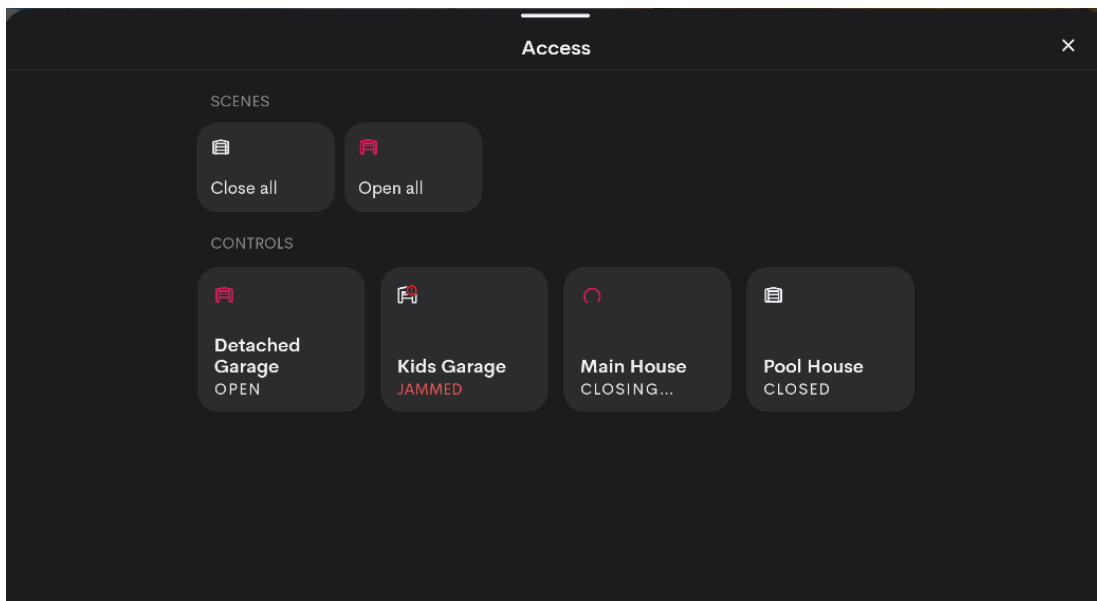


Touching Close All or Open All will send the close or open command to each of the openers. In the case of the Retrofit Kit, due to hardware limitations, the commands will be executed sequentially with a short delay between each door. Touching a Door individually will toggle the door state, i.e. touching a closed door will send the open command.

When a Door command is sent, Crestron Home indicates the transient state. This status is initially generated by Crestron Home, and subsequently updated with live status automatically provided by the Genie Service.



The status of a Door can include, but is not limited to, Closed, Open, Closing, Opening, and Jammed. The Jammed state may include a variety of faults such as an unknown status, timeout while opening or closing, and UL Lockout as part of the Genie architecture. If a Door is indicating that it is Jammed, due to safety regulations, no control from the driver will be possible until the door is manually operated from the hardwired wall control.



Extension User Interface

This driver includes an Extension User Interface to control the door and view licensing information.

Home Tile

Crestron Home displays the Driver on the Home page as a Tile which is created automatically when the Driver is added to a System. The name of the Driver specified while [Adding the Driver to a Crestron Home System](#), will be displayed in the Tile. To access the Driver's controls, select the Garage Doors Tile.

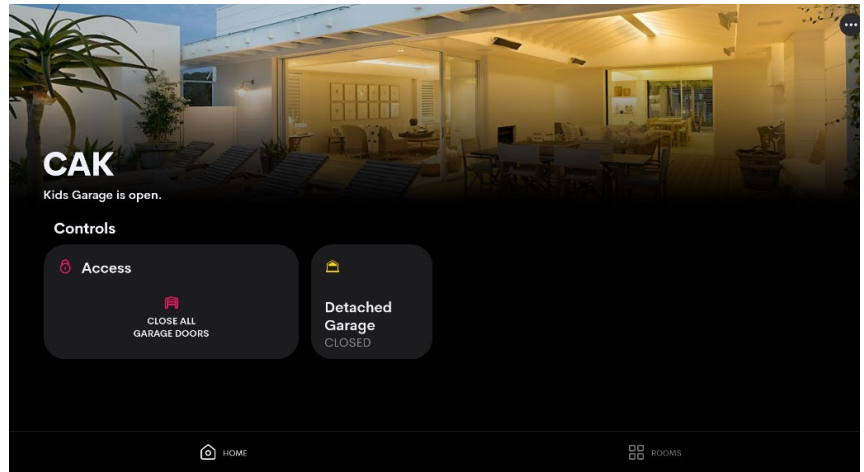
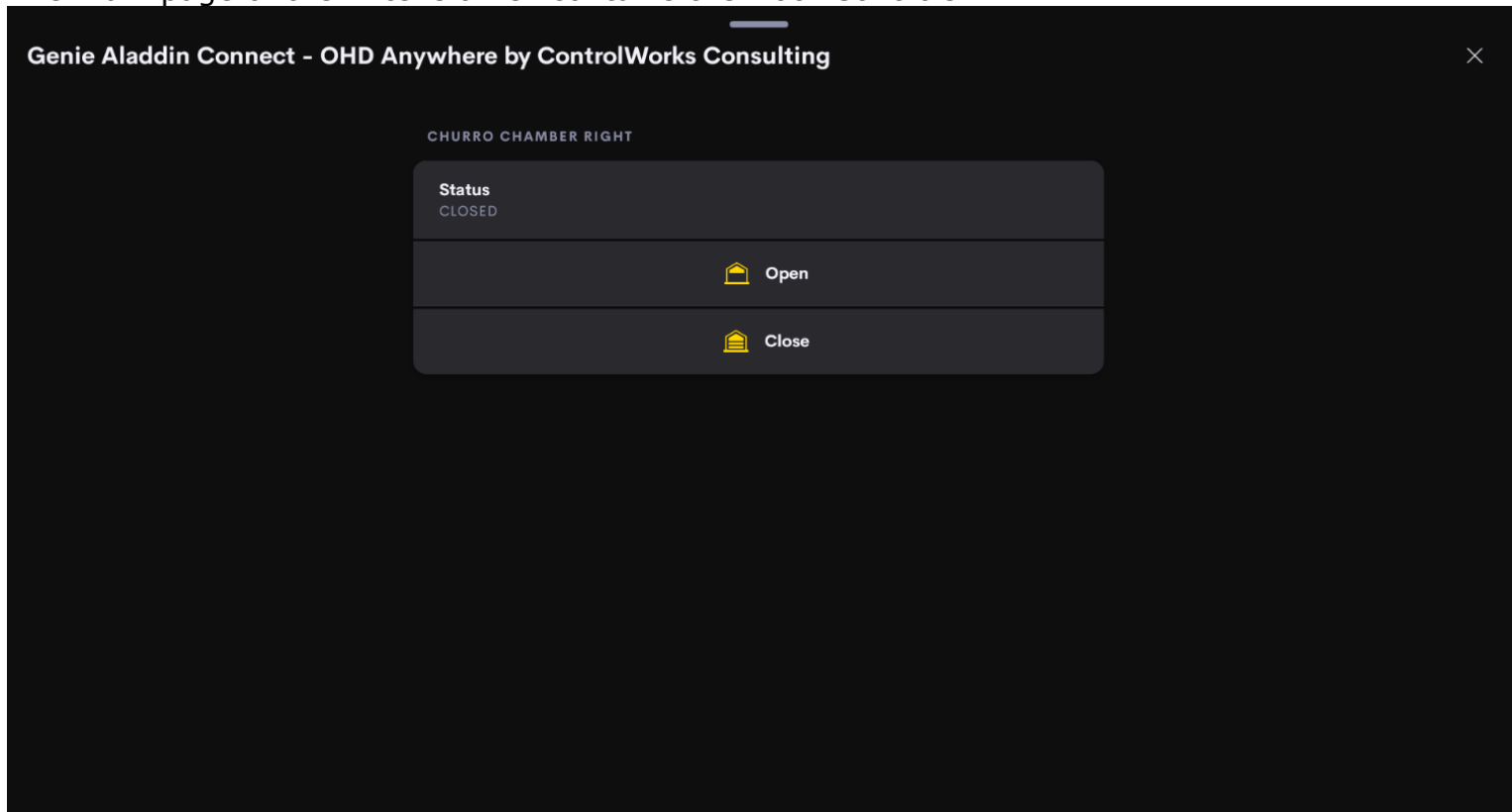


Figure 8 - Home Page

The Tiles (License Helper and Door Tiles) may be shown or hidden by enabling or disabling the "Show On Room Page" and "Show On Home Page" settings in the Platform Driver settings.

Main Page

The main page of the Extension UI contains the Door Controls.



Sequences and Quick Actions

Quick Actions

The full steps to create Quick Actions and Events in Crestron Home can be found here: <https://docs.crestron.com/en-us/8525/Content/CP4R/Installer-Config/Configure-Quick-Actions.htm>.

This Driver supports Quick Actions for opening and closing of doors that have been added to the System.

To configure a Quick Action, navigate to the Customize & Schedule in the Crestron Home Setup App, Select Customize Actions & Events, select the room the Garage Door is in, select Quick Actions, create a Quick Action, then select Sequence in the Settings Tab. Navigate to the room the Garage Door is in, Select the Garage Door Driver. From here you can choose to open or close the Door, and select which Doors you want to perform the action on. Multiple Doors may be added as part of the same Quick Action. Note that only Doors present on the device will be able to be added to a Quick Action.

Events

The Driver supports the following events for each door: unknown, open, timeout opening, closed, timeout closing. These events are triggered when the Driver has been updated by Genie. Event status updates are provided in near real-time but are not instantaneous.

Note: updating or removing the Driver may break the link between the Driver and any Quick Actions. Upon adding a new or updated Driver, any quick actions may have to be re-added manually. This is a limitation of Crestron Home.

Module Application

Network Requirements

Communication to the Genie Aladdin Connect service requires an active Internet connection at all times. The Driver will be in communication with the Genie Aladdin Connect service and the ControlWorks Status Reflector.

Multiple Crestron Home Processors and multiple Genie Accounts

There are limitations on the number of openers that can be paired to processors.

- A Genie/OHD Anywhere Device may only be paired to one Crestron Processor.
- Multiple Crestron Processors may be paired to one Genie/OHD Anywhere Account; however, care should be taken to only pair Devices that have not been paired to another Crestron Processor.
- Only a single Genie/OHD Anywhere account may be used with each Crestron Processor. Pairing multiple Genie / OHD accounts to the same Crestron Processor is not supported.
- Only one Genie Platform Driver may exist in a Crestron Home system
- Only Devices that are owned by the paired account are available for control; it is not possible to control devices that are Shared from another Genie/OHD account.

Polling and Status Updates

The Driver receives pushed (unsolicited) status updates from the Genie Aladdin Connect Service. As a backup measure, the driver will also periodically poll for updated door information including refreshing door status and door names.

Faults

The Driver provides fault status for Genie devices. If the door is in Fault, the wall control or remote must be used to successfully move the door and clear the Fault. Currently, Crestron Home displays all faults as the "Jammed" status, and at this time, all Genie faults are indicated as such.

Support

This Driver is supported by ControlWorks Consulting, LLC. Should you need support for this Driver please email support@controlworks.com or call us at (+1) 440 449 1100. ControlWorks normal office hours are 9 AM to 5 PM Eastern, Monday through Friday, excluding holidays.

Updates, when available, are automatically distributed via our webstore and through the Crestron Home Setup App. If you have purchased a license, we will send a notification to the address entered when the license was purchased when updates are available. In addition, the current versions may be obtained at any time using your username and password at <https://store.controlworks.com/account/login.aspx>.

Should you have any questions regarding the operation of the Genie Aladdin Connect Service, support the for the service can be found at <https://www.geniecompany.com/aladdin-connect-support> and is not provided by ControlWorks.

Distribution Package Contents

The distribution package for this Driver should include:

ControlWorks_GarageDoor_Genie-OHD_Aladdin-Connect_Cloud.pkg	Crestron Home Driver
ControlWorks_GarageDoor_Genie-OHD_Aladdin-Connect_Cloud.pdf	This Help File

Revision History

V4.0.0 caleb@controlworks.com 2025.04.22

-Rewrite as a platform.

V3.0.0 caleb@controlworks.com 2024.10.07

-Unreleased Rewrite for SDK 22 which implements native garage door control.

V2.3 caleb@controlworks.com 2024.04.23

-Driver initialization improvements.

-Corrected issue where another door status update may be displayed on other drivers.

V2.1 caleb@controlworks.com 2024.01.03

-Status server connection stability improvements.

V2.0 caleb@controlworks.com 2023.10.20

-Changes to driver for updated cloud API breaking changes.

V1.0 caleb@controlworks.com 2022.12.12

-Initial Version

Development Environment

This Driver version was developed on the following hardware and software. Different versions of hardware or software may or may not operate properly. If you have questions, please contact us.

Creston Hardware	Firmware Version
CP4-R Processor	v2.8000.00056
Creston Home OS	V 4.005.0285
SDK Version	V 22.0100.0007
TS-1070	V2.004.1029
TSW-1060	v3.002.0028

ControlWorks Consulting, LLC Type 5 Module/Driver License Agreement

Definitions:

"ControlWorks", "We", and "Us" refers to ControlWorks Consulting, LLC, with headquarters located at 8228 Mayfield Road Suite 6B Rear, Chesterland, Ohio 44026.

"You" refer to the entity installing, integrating, or otherwise deploying the Module.

"End User" refer to the person or entity for whom the Crestron hardware is being installed, utilize, and/or will utilize the installed system.

"Module", "Driver", and "Licensed Software" each include all components provided by ControlWorks pursuant to this license agreement required for or useful in implementing the functionality described herein. The Licensed Software includes but is not limited to files with extensions such as UMC, USP, CLZ, SMW, VTP, and PKG.

"Type 2 Module/Driver License" refers to a module license that is granted to a specific Crestron processor and a single controlled device; a separate license must be purchased for each combination of Crestron processor and controlled device.

"System" refers to all components described herein as well as other components, services, or utilities required to achieve the functionality described herein.

"Demo Program" refers to a group of files used to demonstrate the capabilities of the Module, for example a SIMPL Windows program and VisionTools Touchpanel file(s) illustrating the use of the Module but not including the Module.

"Software" refers to the Module and the Demo Program and any files provided by ControlWorks as part of the distribution package including the Module, Demo Program, and associated documentation.

Disclaimer of Warranties

ControlWorks Consulting, LLC software is licensed to You as is. You, the consumer, bear the entire risk relating to the quality and performance of the Licensed Software. In no event will We or any of our Licensors be liable for direct, indirect, incidental or consequential damages resulting from your use or attempt to use the Licensed Software, or for any defect in the Software, breach of security, or other failure or malfunction even if We had reason to know of the possibility of such damage. If the Licensed Software proves to have defects, You and not Us must assume the entire cost of any necessary service, repair, or other loss resulting from such defects.

Indemnification/Hold Harmless

ControlWorks, in its sole and absolute discretion may refuse to provide support for the application of the Module in such a manner that We feel has the potential for property damage, or physical injury to any person. Dealer shall fully and unconditionally indemnify and hold harmless ControlWorks Consulting LLC, its employees, agents, licensors, and owners from any and all liability, including direct, indirect, and consequential damages, including but not limited to personal injury, property damage, or lost profits which may result in any way from the operation (or failure to operate) of a program or System containing Licensed Software or any component thereof.

Provision of Support

We provide limited levels of technical support only for the most recent version of the Module as determined by Us. We do not provide support for previous versions of the Module, modifications to the module not made by Us, or to persons who have not purchased the Module from Us. In addition, we may decline to provide support if the demo Program has not been utilized. We may withdraw a module from sale and discontinue providing support at any time and for any reason, including, for example, if the equipment for which the Module is written is discontinued or substantially modified. The remainder of your rights and obligations pursuant to this license will not be affected should We discontinue support for a Module.

Modification of Software

You may not decrypt (if encrypted), reverse engineer, modify, translate, disassemble, or de-compile the Licensed Software in whole or part. Any modifications to the Licensed Software shall immediately terminate any licenses purchased with respect thereto. You may, however, modify the Demo Program.

License Grant

You may use the Licensed Software on the specific Crestron Processor identified when the license was purchased or otherwise granted by ControlWorks. You may integrate with only as many devices using the Licensed Software as you have been granted licenses for (for example, if you purchase 3 licenses associated with a processor, you may control up to 3 devices using the Licensed Software from that processor).

Licenses are generally non-transferrable, however in ControlWorks sole discretion, ControlWorks may grant a transfer of an existing license to a new Crestron Processor. If granted, transfer may be subject to an administrative fee as determined by ControlWorks from time to time, and the prior license may be disabled remotely.

You may permit End Users to utilize the functionality provided by the Licensed Software as part of a Crestron Home configuration or Crestron Program, as applicable.

Software authored by ControlWorks remains the property of ControlWorks. Upon purchasing one or more Licenses, ControlWorks grants You the non-exclusive, non-transferable, perpetual license to use the specific Software authored by ControlWorks as a component of Systems programmed or configured by You for which a License has been acquired. This Software is the intellectual property of ControlWorks Consulting, LLC and is protected by law, including United States and International copyright laws. Except as part of a completed configuration (for Crestron Home® Processors) or program (for all other devices) the license granted herein, may not be transferred, resold, or assigned by any means.

The use of this software indicates acceptance of the terms of this agreement.

Copyright (C) 2023-2025 ControlWorks Consulting, LLC All Rights Reserved – Use Subject to License.

US Government Restricted Rights. Use, duplication or disclosure by the Government is subject to restrictions set forth in subparagraphs (a)-(d) of FAR 52.227-19.