



QMotion QSync Gen 3 Shades v1.0 Module Application Guide

Description

This module is compatible with QMotion Gen 3 shades via the QMotion Qsync. This module allows 1-way control of shade groups.

Supported Processors

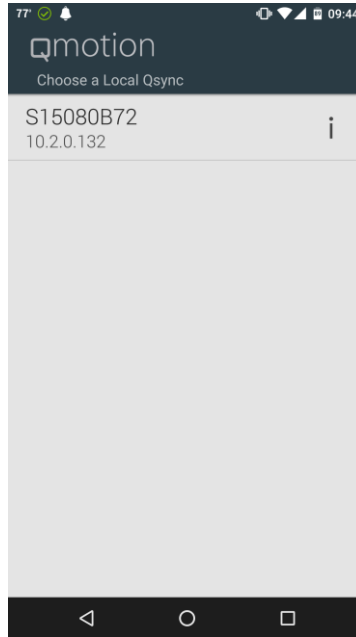
Any 2-series with an Ethernet card or 3-series processor is supported.

Compatibility			Processor Requirements	
				

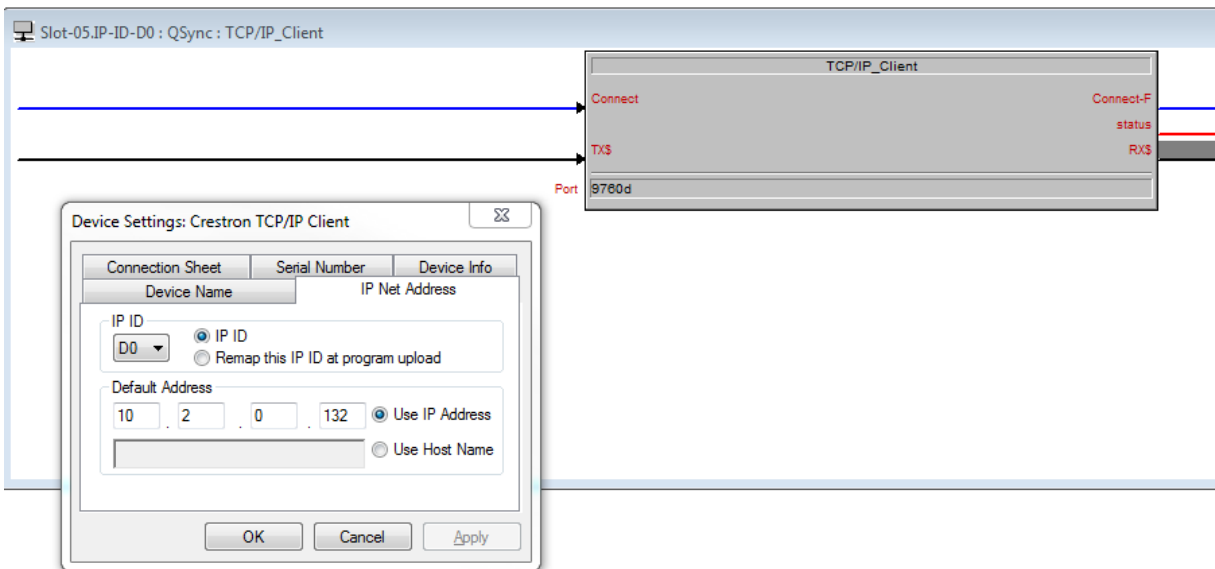
Ethernet Configuration Information

Qsync IP Address

This module utilizes a TCP/IP Client to communicate with the Qmotion Qsync. To determine the Qsync address, download the Qmotion FM app on an Android or iOS device. The app will auto discover any Qsync gateways. Since the Qsync does not support a static IP Addresses, it is recommended to use a DHCP Reservation to maintain communication with the Qsync.



Place the IP Address of the Qsync into your TCP/IP Client symbol, and set the port to 9760.

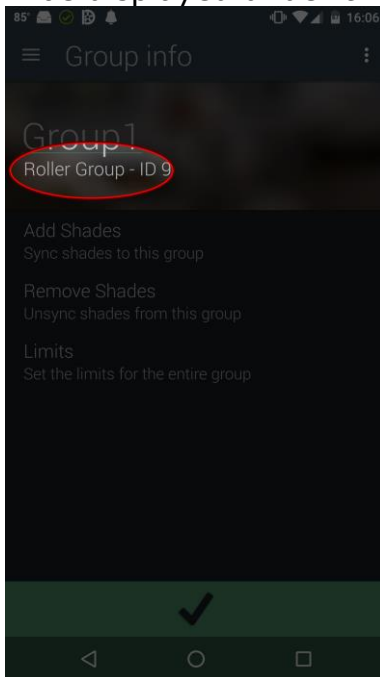


Connect the QMotion Qsync Engine to the modules and TCP/IP Client as demonstrated in the demo program. .

Module Application

Determining addresses.

Shades cannot be individually controlled, rather shades are learned to a group via the app, and the group is controlled. To determine a group address, select the "i" icon next to a group to load the group info page. The group ID will be displayed under the name of the group.



Signal and Parameter Descriptions – Qmotion_Qsync_Gen3_Shades v1.0

Bracketed signals such as "[signal_name]" are optional signals

DIGITAL INPUTS

[raise]Pulse to send the group to the upper limit.
[lower]Pulse to send the group to the lower limit.
[presetx].....Pulse to send the group to the predefined preset.

ANALOG INPUTS

[goto_level].....Initialize to send a group of shades to a level. Do not ramp the input.

SERIAL INPUTS

[rx\$]Tie to TCP/IP Port RX\$.

SERIAL OUTPUTS

[tx\$]Tie to tx_from_module\$ on Qsync Engine.

PARAMETERS

Groupx IDEnter the Group ID for a group of shades as found in the Qmotion App.

Signal and Parameter Descriptions – Qmotion_Qsync_Engine_v1.0

Bracketed signals such as "[signal_name]" are optional signals

DIGITAL INPUTS

connected_fb.....Tie to Connect-F of the TCP/IP Client.
force_disconnectpulse to force the TCP/IP client to disconnect. Typically this will be undefined and used for debugging purposes only.
force_connectpulse to force the TCP/IP client to connect. Typically this will be undefined and used for debugging purposes only.

SERIAL INPUTS

tx_from_modules\$Tie to tx\$ of shade modules.
rx_from_client\$Tie to RX\$ of TCP/IP Client.

DIGITAL OUTPUTS

connect_requestconnect to Connect of TCP/IP Client.

SERIAL OUTPUTS

tx\$_to_client\$Tie to TX\$ on TCP/IP Client.

Support

This module is supported by ControlWorks Consulting, LLC. Should you need support for this module please email support@controlworks.com or call us at 440-449-1100. ControlWorks normal office hours are 9 AM to 5 PM Eastern, Monday through Friday, excluding holidays.

Before calling for support, please ensure that you have loaded and tested operation using the included demonstration program and touchpanel(s) to ensure that you understand the correct operation of the module. It may be difficult for ControlWorks to provide support until the demonstration program is loaded.

Updates, when available, are automatically distributed via Email notification to the address entered when the module was purchased. In addition, updates may be obtained using your username and password at <https://www.controlworks.com/Customers/Login.aspx>.

Distribution Package Contents

The distribution package for this module should include:

QMotion_Qsync_Gen3_Shades_(ControlWorks)_v1.0.umc	Crestron User Module
QMotion_Qsync_Engine_V1.0_(ControlWorks).usp	SIMPL+ module
QMotion_Qsync_Engine_V1.0_(ControlWorks).ush	SIMPL+ header file
Qmotion_Qsync_Gen3_Shades_TSW1052_(ControlWorks)_v1.0.vtp	Demo touchpanel for TSW-1052
Qmotion_Qsync_Gen3_Shades_(ControlWorks)_v1.0.smw	Demo program for PRO3 processor

Revision History

V1.0 caleb@controlworks.com 2016.08.01

-initial release

Development Environment

This module version was developed on the following hardware and software. Different versions of hardware or software may or may not operate properly. If you have questions, please contact us.

Manufacturer Hardware	Software Version
Qsync	
Crestron Hardware	Firmware Version
Crestron AV3 Processor	1.501.0013
Software	Software Version
SIMPL Windows	4.03.24
Vision Tools Pro-e	6.0.07
Smart Graphics Controls	2.09.06.01
Crestron Database	57.00.003.00
Device Database	76.05.002.00

ControlWorks Consulting, LLC Module License Agreement

Definitions:

ControlWorks, *We*, and *Us* refer to ControlWorks Consulting, LLC, with headquarters located at 701 Beta Drive, Suite 22 Mayfield Village, Ohio 44143-2330. *You* and *Dealer* refer to the entity purchasing the module. *Client* and *End User* refer to the person or entity for whom the Crestron hardware is being installed and/or will utilize the installed system. *System* refers to all components described herein as well as other components, services, or utilities required to achieve the functionality described herein. *Module* refers to files required to implement the functionality provided by the module and may include source files with extensions such as UMC, USP, SMW and VTP. *Demo Program* refers to a group of files used to demonstrate the capabilities of the Module, for example a SIMPL Windows program and VisionTools Touchpanel file(s) illustrating the use of the Module but not including the Module. *Software* refers to the Module and the Demo Program.

Disclaimer of Warranties

ControlWorks Consulting, LLC software is licensed to You as is. You, the consumer, bear the entire risk relating to the quality and performance of the Software. In no event will ControlWorks Consulting, LLC be liable for direct, indirect, incidental or consequential damages resulting from any defect in the Software, even if ControlWorks Consulting, LLC had reason to know of the possibility of such damage. If the Software proves to have defects, You and not Us must assume the cost of any necessary service or repair resulting from such defects.

Provision of Support

We provide limited levels of technical support only for the most recent version of the Module as determined by Us. We do not provide support for previous version of the module, modifications to the module not made by Us, to persons who have not purchased the module from Us. In addition, we may decline to provide support if the Demo Program has not been utilized. We may withdraw a module from sale and discontinue providing support at any time and for any reason, including, for example, if the equipment for which the Module is written is discontinued or substantially modified. The remainder of your rights and obligations pursuant to this license will not be affected should ControlWorks discontinue support for a module.

Modification of Software

You may not decrypt (if encrypted), reverse engineer, modify, translate, disassemble, or de-compile the Module in whole or part. You may modify the Demo Program. In no event will ControlWorks Consulting, LLC be liable for direct, indirect, incidental or consequential damages resulting from You modifying the Software in any manner.

Indemnification/Hold Harmless

ControlWorks, in its sole and absolute discretion may refuse to provide support for the application of the Module in such a manner that We feel has the potential for property damage, or physical injury to any person. Dealer shall indemnify and hold harmless ControlWorks Consulting LLC, its employees, agents, and owners from any and all liability, including direct, indirect, and consequential damages, including but not limited to personal injury, property damage, or lost profits which may result from the operation of a program containing a ControlWorks Consulting, LLC Module or any component thereof.

License Grant

Software authored by ControlWorks remains the property of ControlWorks. ControlWorks grants You the non-exclusive, non-transferable, perpetual license to use the Software authored by ControlWorks as a component of Systems programmed by You. This Software is the intellectual property of ControlWorks Consulting, LLC and is protected by law, including United States and International copyright laws. This Software and the accompanying license may not be transferred, resold, or assigned to other persons, organizations or other Crestron Dealers via any means.

The use of this software indicates acceptance of the terms of this agreement.

Copyright (C) 2016 ControlWorks Consulting, LLC All Rights Reserved – Use Subject to License.
US Government Restricted Rights. Use, duplication or disclosure by the Government is subject to restrictions set forth in subparagraphs (a)-(d) of FAR 52.227-19.