



ControlWorks Weather Hourly Module Application Guide

Description

This module allows a 2-series or 3-series Crestron processor with a connection to the internet to download and display a seven-hour, short-term forecast for one "home" location.

Your processor must have Ethernet capability and be connected to the internet. The processor must also have DNS servers declared and other pertinent settings such as hostname and domain name configured properly.

Internet Disclaimer

This module requires Internet access and it depends on a web-based service to provide content to ControlWorks Consulting. As such, ControlWorks Consulting is unable to guarantee full time availability of weather content. In the event of an outage, ControlWorks will work as quickly as possible to get the content back online.

ControlWorks Consulting, LLC accepts no responsibility for the accuracy or your usage of data returned by the module.

Supported Processors

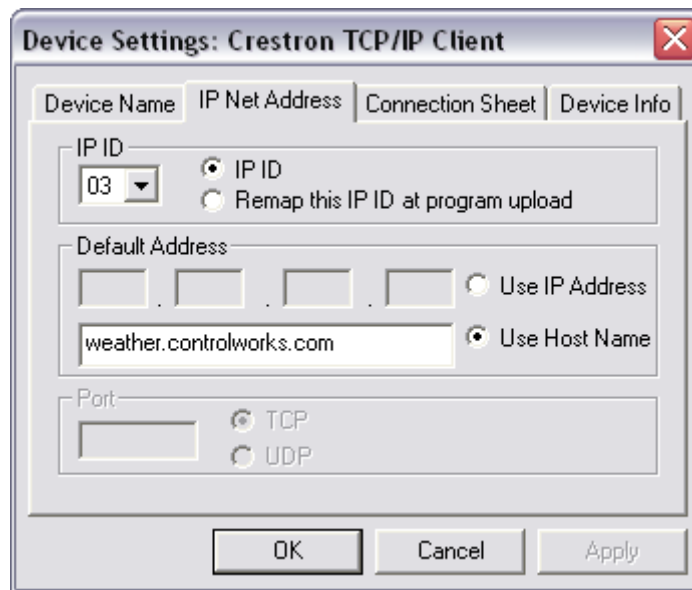
Any 2-series or 3-series processor with an Ethernet card is supported.

Compatibility			Processor Requirements	
				

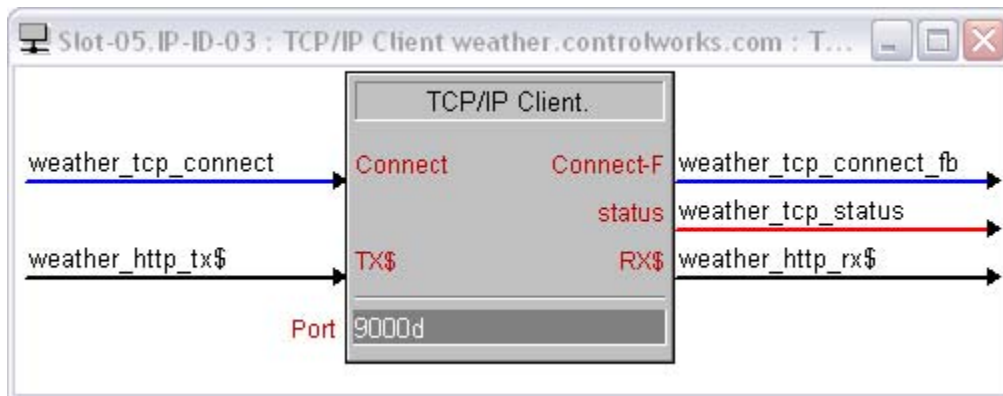
Ethernet Configuration Information

The processor must have DNS servers and hostname declared in the DNS Management and Ethernet Addressing setup. To declare DNS servers from Toolbox, connect to your processor and select "DNS Management ..." from the "Functions" menu. Use the DNS server IP addresses provided by the Internet Service Provider of the project, or from open DNS servers available on the internet. Be sure to test the settings by using the "Test..." button and entering a domain name such as www.controlworks.com. Declare a Hostname by selecting "Ethernet Addressing..." from the "Functions" menu. Enter a Hostname in the "Host Name" field. The Hostname can be any combination of letters, numbers and select symbols, as long as the Hostname is unique on the network.

Insert a TCP/IP client into your program. Configure the client as shown below, making sure you use the host name `weather.controlworks.com` as the default address. The IP ID will vary depending on where it is inserted into the program, or the IP ID numbering scheme of the system.



Declare the TCP/IP client symbol as shown below, making sure the port is set to 9000d.



Module Application

This module is a service-based module. For the module to function, you must have an active service account with ControlWorks Consulting, LLC. To sign up for a service account, and for terms of service visit <http://admin.controlworks.com> . Once an account is set up for the project, the "client id" parameter field must be filled out with the client ID assigned at the time of creating the account.

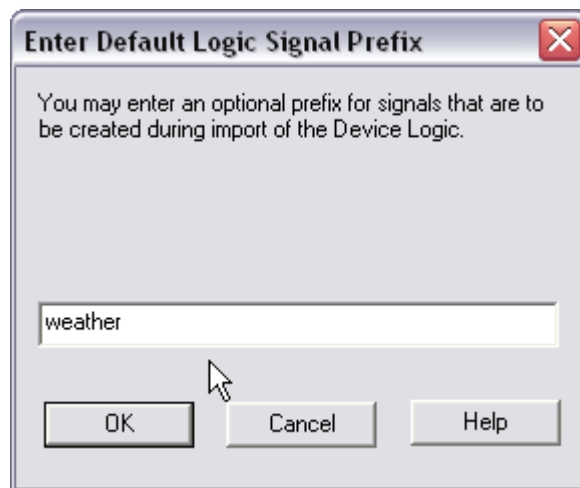
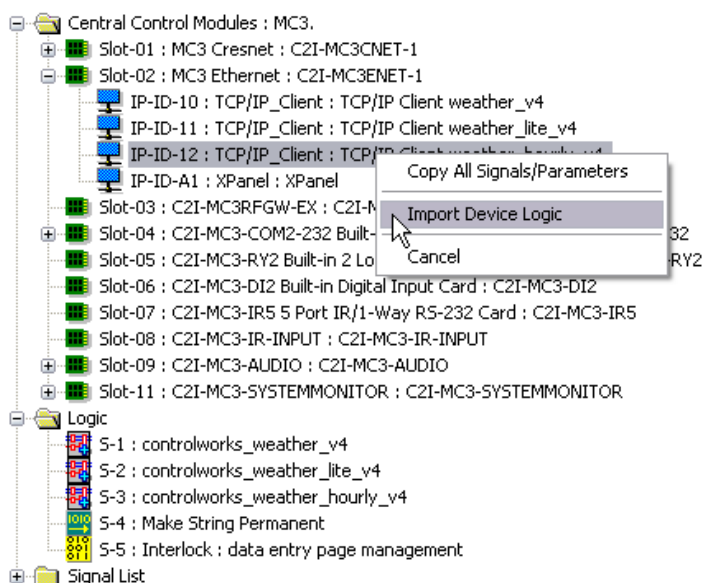
Formatting for weather requests should be in one of the following forms;

- 5 digit U.S. zip code
- 4 character ICAO code, such as LFPB. ICAO codes can be found at this third-party site. <http://www.airport-technology.com/icao-codes/>
- U.S. city, full state name. A space between the comma and the full state name can be entered, but is not required.
- U.S. city, 2 letter state abbreviation. A space between the comma and the 2 letter state name abbreviation can be entered, but is not required.
- Canadian city, full province name. A space between the comma and the full province name can be entered, but is not required.
- Canadian city, 2 letter province abbreviation. A space between the comma and the 2 letter province name abbreviation can be entered, but is not required.

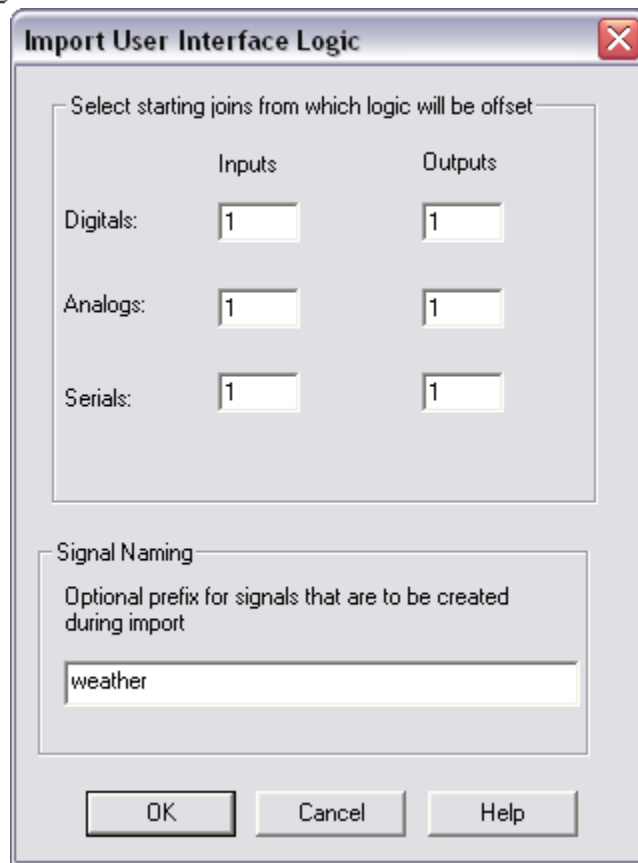
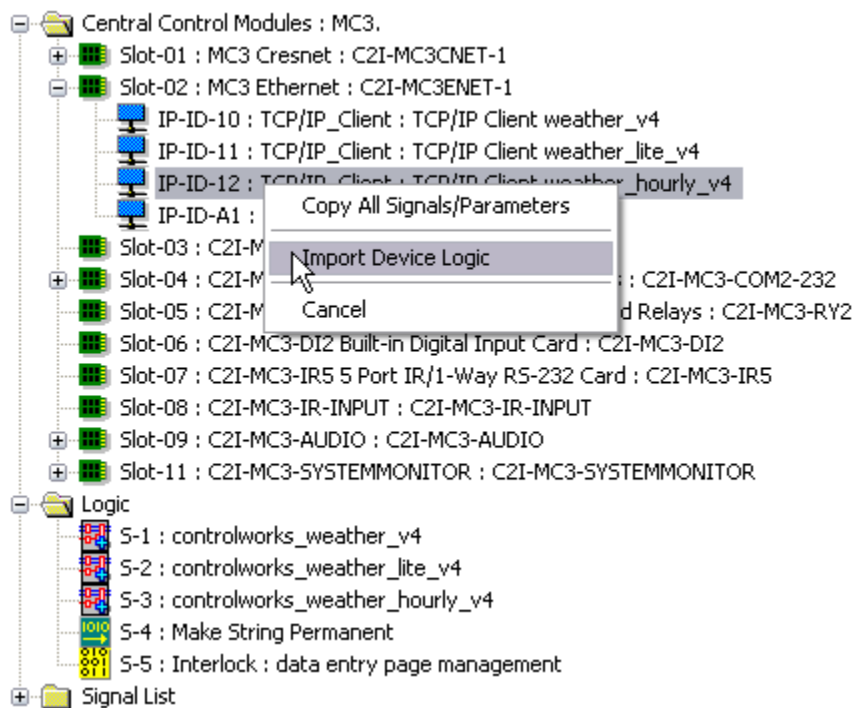
Forecasts based on an ICAO code are usually not as detailed as other requests.

Forecast data provided from the source is updated only several times per day, therefore requests to refresh the data should only be made in a similar timeframe. Current condition data provided from the source is updated approximately every hour and a half, therefore requests to refresh the data should only be made in a similar timeframe.

This module is built utilizing virtual connection logic that will allow you to right-click and drag the module symbol to a TCP/IP client symbol, select "Import Device Logic" to auto-connect the two symbols. You will be prompted to add an optional signal prefix to the auto-connected signals. SIMPL will add an underscore character at the end of the prefix you enter automatically, so a space or underscore does not need to be entered in this dialog. Due to Crestron's implementation of this feature, the programmer will still need to manually enter the port number (9000d) on the TCP/IP client symbol.



Also utilized is connection logic enabling you to right-click and drag the weather module symbol to a touchpanel to have all of the two symbols auto-connected. Right-click and drag the weather module symbol to a touchpanel and select "Import User Interface Logic" from the drop-down list. You will be prompted for starting join offsets and a signal prefix. Using values of 100 for all of the offsets will connect the joins to match the demo touchpanel files included in the distribution package. You may change this offset to suit the needs of your project.



The module will automatically update the current conditions based on the value placed on the "Update Frequency" parameter of the module. Valid entries for this parameter are "Daily [24d]", "Every 12 hours [12d]", "Every 6 hours [6d]", and "Every 3 hours [3d]."

The SIMPL module file, "controlworks_weather_hourly_v4.umc" and the SIMPL+ file, "controlworks_weather_parser_hourly_v4.usp" are encrypted.

Signal and Parameter Descriptions

Bracketed signals such as "[signal_name]" are optional signals

DIGITAL INPUTS

weather_tcp_connect_fb..... Route to the Connect-F output of the TCP/IP client.

ANALOG INPUTS

[weather_tcp_status] Routed from the TCP/IP client symbol. Indicates the status of the connection.

SERIAL INPUTS

weather_http_rx\$ Route from the TCP/IP client rx\$ output.

DIGITAL OUTPUTS

weather_tcp_connect Route to the Connect input on the TCP/IP client.

ANALOG OUTPUTS

[hourly_icon_multimode[1 - 7]] Used to drive a multimode button containing all of the graphics for each hours' conditions icon.

SERIAL OUTPUTS

weather_hourly_http_tx\$. Route to the TCP/IP client tx\$ input.
[hourly_forecast_timestamp\$. Timestamp provided by the reporting agency for the hourly forecast.
[hourly_timestamp\$[1 - 7]]. Timestamp for each hour of the seven-hour forecast.
[hourly_sky\$[1 - 7]]. Sky conditions for each hour of the seven-hour forecast. An example would be "Partly Cloudy".
[hourly_temperature\$[1 - 7]]. Temperature for each hour of the seven-hour forecast.
[hourly_precipitation_type\$[1 - 7]]. Precipitation type for each hour of the seven-hour forecast. An example would be "Rain" or "Sleet".
[hourly_precipitation_chance\$[1 - 7]]. Chance in percent of precipitation for each hour of the seven-hour forecast.
[hourly_dewpoint\$[1 - 7]]. Dewpoint for each hour of the seven-hour forecast.
[hourly_humidity\$[1 - 7]]. Humidity for each hour of the seven-hour forecast.
[hourly_wind_speed\$[1 - 7]]. Wind speed for each hour of the seven-hour forecast.
[hourly_ceiling_height\$[1 - 7]]. Cloud ceiling height for each hour of the seven-hour forecast.
[hourly_visibility\$[1 - 7]]. Visibility in miles for each hour of the seven-hour forecast.

PARAMETERS

client id. Enter the unique client id number given when registering this module to a particular job site. This module will not function if the client id entered here does not match the number assigned to the job site. You can register the module at admin.controlworks.com
home location. Location value for the desired current conditions information. Value must be entered as one of the following; a five digit U.S. zip code, a four character ICAO airport code, or, for U.S. or Canadian locations, a string with the city name followed by a comma then the state or province name or two-letter abbreviation.
update frequency. The module will automatically update the current conditions based on the value placed on the "Update Frequency" parameter of the module. Valid entries for this parameter are "Daily [24d]", "Every 12 hours [12d]", "Every 6 hours [6d]", and "Every 3 hours [3d]."

Support

This module is supported by ControlWorks Consulting, LLC. Should you need support for this module please email support@controlworks.com or call us at 440-449-1100. ControlWorks normal office hours are 9 AM to 5 PM Eastern, Monday through Friday, excluding holidays.

Before calling for support, please ensure that you have loaded and tested operation using the included demonstration program and touchpanel(s) to ensure that you understand the correct operation of the module. It may be difficult for ControlWorks to provide support until the demonstration program is loaded.

Updates, when available, are automatically distributed via Email notification to the address entered when the module was purchased. In addition, updates may be obtained using your username and password at <http://www.thecontrolworks.com/customerlogin.aspx>.

Distribution Package Contents

The distribution package for this module should include:

controlworks_weather_v4_demo.smw	Sample SIMPL windows program for a PRO2
controlworks_weather_v4.umc	User module to insert in program
controlworks_weather_parser_v4.usp	SIMPL+ module used by .UMC file
Base64 Encode Engine v1.usp	SIMPL+ module used by .UMC file
Two String Comparison v1.usp	SIMPL+ module used by .UMC file
cworks_weather_tpmc17_v4.vtp	Sample touchpanel file
cworks_weather_TPS-4L_v4.vtp	Sample touchpanel file
cworks_weather_TPS-12_v4.vtp	Sample touchpanel file
cworks_weather_TPS-15_v4.vtp	Sample touchpanel file
cworks_weather_TPS-3000_v4.vtp	Sample touchpanel file
cworks_weather_XPANEL_v4.vtp	Sample touchpanel file
controlworks_weather_hourly_v4.umc	User module to insert in program
controlworks_weather_hourly_parser_v4.usp	SIMPL+ module used by .UMC file
controlworks_weather_lite_v4.umc	User module to insert in program
controlworks_weather_parser_lite_v4.usp	SIMPL+ module used by .UMC file

Revision History

v1 gary@controlworks.com 2008.02.27

-Initial release

v4 gary@controlworks.com 2011.04.12

-What happened to v2 and v3? There were none. Increased revision number to track with the rest of the weather modules

-Tested for series3 processor compatibility

Development Environment

This version of the module was developed and tested on the following hardware and software. Different versions of hardware or software may or may not operate properly. If you have questions, please contact us.

Hardware	Firmware Version
Crestron MC3 Processor	1.000.0027
Crestron PRO2 Processor	4.001.1012
Software	Software Version
Crestron SIMPL Windows	3.01.24.00
Crestron Vision Tools Pro-e	4.2.14.02
Crestron Database	25.00.002.00
Device Database	33.00.005.00

ControlWorks Consulting, LLC Module License Agreement

Definitions:

ControlWorks, *We*, and *Us* refer to ControlWorks Consulting, LLC, with headquarters located at 701 Beta Drive, Suite 22 Mayfield Village, Ohio 44143-2330. *You* and *Dealer* refer to the entity purchasing the module. *Client* and *End User* refer to the person or entity for whom the Crestron hardware is being installed and/or will utilize the installed system. *System* refers to all components described herein as well as other components, services, or utilities required to achieve the functionality described herein. *Module* refers to files required to implement the functionality provided by the module and may include source files with extensions such as UMC, USP, SMW and VTP. *Demo Program* refers to a group of files used to demonstrate the capabilities of the Module, for example a SIMPL Windows program and VisionTools Touchpanel file(s) illustrating the use of the Module but not including the Module. *Software* refers to the Module and the Demo Program.

Disclaimer of Warranties

ControlWorks Consulting, LLC software is licensed to You as is. You, the consumer, bear the entire risk relating to the quality and performance of the Software. In no event will ControlWorks Consulting, LLC be liable for direct, indirect, incidental or consequential damages resulting from any defect in the Software, even if ControlWorks Consulting, LLC had reason to know of the possibility of such damage. If the Software proves to have defects, You and not Us must assume the cost of any necessary service or repair resulting from such defects.

Provision of Support

We provide limited levels of technical support only for the most recent version of the Module as determined by Us. We do not provide support for previous version of the module, modifications to the module not made by Us, to persons who have not purchased the module from Us. In addition, we may decline to provide support if the Demo Program has not been utilized. We may withdraw a module from sale and discontinue providing support at any time and for any reason, including, for example, if the equipment for which the Module is written is discontinued or substantially modified. The remainder of your rights and obligations pursuant to this license will not be affected should ControlWorks discontinue support for a module.

Modification of Software

You may not decrypt (if encrypted), reverse engineer, modify, translate, disassemble, or de-compile the Module in whole or part. You may modify the Demo Program. In no event will ControlWorks Consulting, LLC be liable for direct, indirect, incidental or consequential damages resulting from You modifying the Software in any manner.

Indemnification/Hold Harmless

ControlWorks, in its sole and absolute discretion may refuse to provide support for the application of the Module in such a manner that We feel has the potential for property damage, or physical injury to any person. Dealer shall indemnify and hold harmless ControlWorks Consulting LLC, its employees, agents, and owners from any and all liability, including direct, indirect, and consequential damages, including but not limited to personal injury, property damage, or lost profits which may result from the operation of a program containing a ControlWorks Consulting, LLC Module or any component thereof.

License Grant

Software authored by ControlWorks remains the property of ControlWorks. ControlWorks grants You the non-exclusive, non-transferable, perpetual license to use the Software authored by ControlWorks as a component of Systems programmed by You. This Software is the intellectual property of ControlWorks Consulting, LLC and is protected by law, including United States and International copyright laws. This Software and the accompanying license may not be transferred, resold, or assigned to other persons, organizations or other Crestron Dealers via any means.

The use of this software indicates acceptance of the terms of this agreement.

Copyright (C) 2011 ControlWorks Consulting, LLC All Rights Reserved – Use Subject to License.
US Government Restricted Rights. Use, duplication or disclosure by the Government is subject to restrictions set forth in subparagraphs (a)-(d) of FAR 52.227-19.