



eSommelier Module V6 Module Application Guide

Description






This module allows TCP-IP access to the eSommelier Deluxe (www.esommelier.net) wine management server. Users can browse the database on the server and view details for each wine. The module runs independently of the eSommelier touchpanel so two users may browse the database at once. All functions that are available on the eSommelier touchpanel are available via the module with the exception of adding and deleting wines, editing notes and bin numbers. A touchpanel with a resolution of 1024x768 is recommended.

Supported Processors

A 2-series processor is required and it must be Ethernet equipped. Processors such as the PRO2, AV2 and PAC2 may be used if equipped with at least a C2ENET-1 card. Processors with Ethernet on board such as the CP2E, MP2E, MC2E and PAC2M may also be used.

Serial Cable Pinout

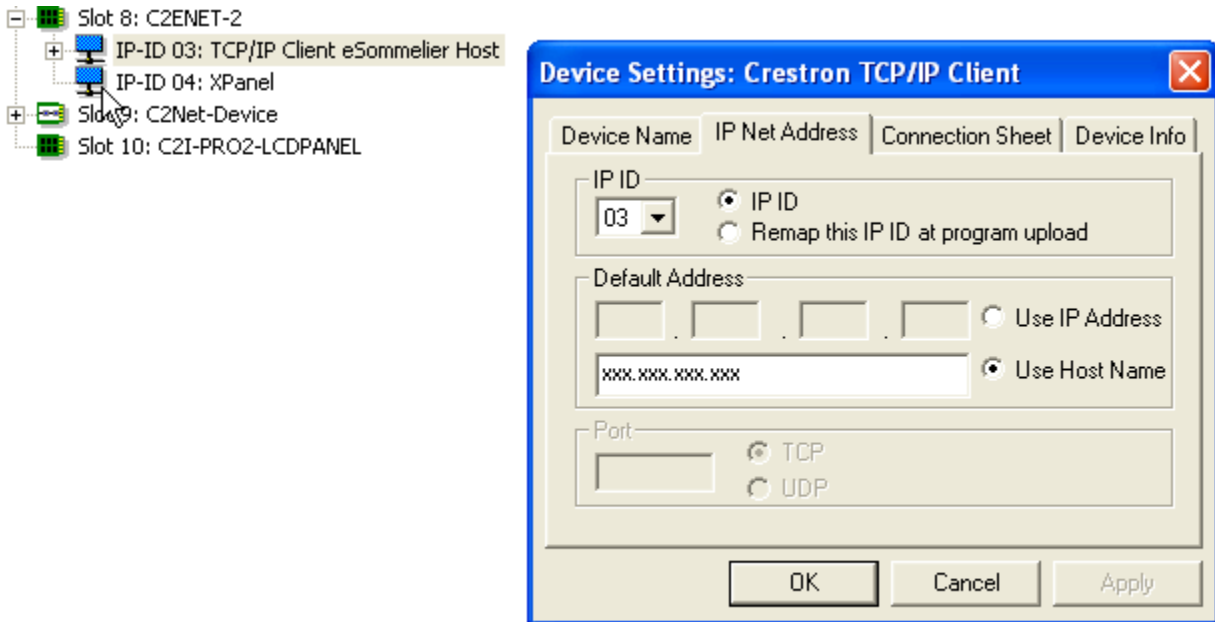
This module supports Ethernet connections only. Serial integration is not supported by the eSommelier server at this time.

Compatibility			Processor Requirements	
 2-Series Compatible	 NOT CNMSX Compatible	 NOT System Builder Compatible	 Ethernet REQUIRED	 Compact Flash NOT NEEDED

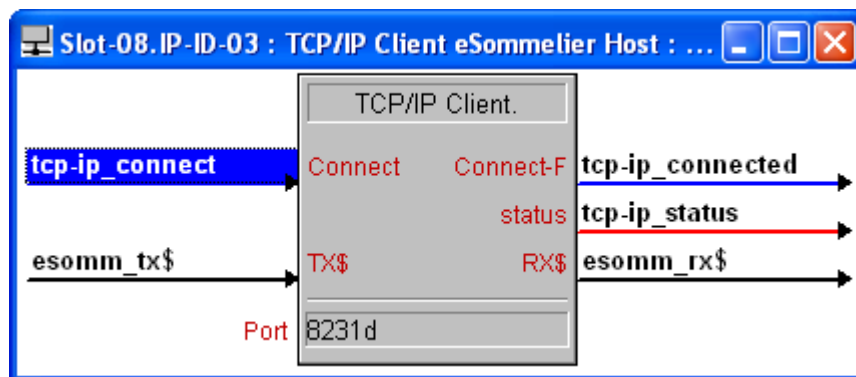
TCP/IP Client Connection

This module requires that a TCP/IP client be inserted into your program. It is strongly suggested that you run the demo program first before attempting to apply the module in your own program.

Under configuration in SIMPL Windows add a TCP/IP Client to the Ethernet card for your processor. Once you have added the client then click on the "IP Net Address" tab and enter the IP address of the eSommelier server in the place of "xxx.xxx.xxx.xxx".



Now goto the program side of SIMPL Windows and open the TCP/IP Client that you added. Connect the digital, analog and serial signals from the client to the module as described below. Then enter the port number for the client so it looks like this:



Signal and Parameter Descriptions

DIGITAL INPUTS

tcp-ip_connected.....	connection fb from the TCP-IP Client
get_status.....	queries for system status
list_country / list_ripeness	sorts database by listed modifier
list_next / list_prev	page up and down in the current list
list_up_1 / list_down_1.....	scrolls up/down by one in the list
list_index	toggles index subpage to jump to a specific letter
set_all	display all wines
set_reorder	display wines with the re-order flag set
set_avail	display only available wines
set_reset.....	reset all search parameters
set_select_1 / set_select_12.....	select specific display search result
wine_search	toggles keyboard to enter search string
wine_next/prev	page up and down in the wine list
wine_up_1 / wine_dn_1.....	scrolls up/down by one in the list
wine_notes_next/prev	moves through the notes text
wine_select_1 / wine_select_7.....	select specific wine in the list for details
details_next/prev	select details for next/prev wine in the wine list
bottles_next/prev.....	next/prev page of bottle locations
details_edit	select current wine for editing
edit_country / edit_notes	select specific field for editing
edit_select_1 / edit_select_12	used to select text for field being edited
key_shift / key_enter.....	keyboard characters for search/edit

ANALOG INPUTS

tcpip_status	status value from TCP-IP client
--------------------	---------------------------------

SERIAL INPUTS

esomm_rx\$	route to serial rx\$ for TCP-IP client
------------------	--

DIGITAL OUTPUTS

tcp-ip_connect.....	connection fb, route to the TCP-IP Client
list_country_fb / list_ripeness_fb	fb for current sort by
list_index_fb.....	fb for index search subpage
set_all_fb.....	fb for display all wines mode
set_reorder_fb.....	fb for display wines with the re-order flag set
set_avail_fb.....	fb for display only available wines
set_select_1_fb / set_select_12_fb.....	fb for currently selected display search
wine_search_fb.....	fb to indicate search mode
edit_error.....	pulses if there is an error when editing a field
edit_country_fb / edit_notes_fb	fb for field selected for editing
edit_select_1_fb / edit_select_12_fb	fb for currently selected edit field
key_shift_fb	fb for shift key

ANALOG OUTPUTS

list_position.....	relative position in search list
wine_position	relative position in wine results
notes_position	relative position in lines of notes
status_fb_ana.....	fb for all/reorder/avail animation
keyboard_shift_ana	analog to drive multi-mode keyboard
wine_type_code_1 / wine_type_code_7	analog to drive multi-mode wine type

SERIAL OUTPUTS

esomm_tx\$route to serial tx\$ for TCP-IP client
sw_version\$sw version of eSommelier
last_sw_update\$last date of software update
serial_number\$serial number of eSommelier
total_wines\$total number of wines in the system
total_value\$estimated total value of wines
last_reading\$date/time of last temp/hum readings
last_temp\$temperature at last reading
last_hum\$humidity at last reading
min_temp\$minimum temp over last 30 days
max_temp\$maximum temp over last 30 days
avg_temp\$average temp over last 30 days
min_hum\$minimum humidity over last 30 days
max_hum\$maximum humidity over last 30 days
avg_hum\$average humidity over last 30 days
set\$text with main search results
details_country\$text with home country of the current wine
details_region\$text with region details of the current wine
details_type\$text with wine type details
details_variety\$text with wine variety details
details_winery\$text with winery details
details_vintage\$text with vintage details
details_rating\$text with wine rating info
details_ripe\$text with ripeness details
details_qty\$text with current quantity of selection
details_reorder\$text with reorder count
details_location\$text with bin location in cellar
details_price\$text with wine pricing details
details_name\$text with currently selected wine
details_notes\$text with notes on selection
list\$[1]-[12]text for 12 search buttons
winery\$[1]-[7]text of winery results
variety\$[1]-[7]text of variety results
region\$[1]-[7]text of region results
country\$[1]-[7]text of country results
vintages\$[1]-[7]text of vintage results
cost\$[1]-[7]text of cost results
ripe\$[1]-[7]text of ripeness results
qty\$[1]-[7]text of quantity results
rating\$[1]-[7]text of rating results
notes\$[1]-[5]text of 5 notes fields
bottle_type\$[1]-[6]text of 6 bottle type fields
bottle_location\$[1]-[6]text of 6 bottle location fields
search\$text for searching
edit_current_label\$ / current_value\$text of current values for edit fields
edit_new_label\$ / new_value\$text of new values for edit fields
edit_country\$ / edit_name\$text of edit fields
collection_bottle\$[1]-[total]text of bottle types in collection
collection_count\$[1]-[total]text of bottle count in collection for each type

PARAMETERS

This module does not utilize any parameters.

Support

This module is supported by ControlWorks Consulting, LLC. Should you need support for this module please email support@controlworks.com or call us at 440-729-4640. ControlWorks normal office hours are 9 AM to 5 PM Eastern, Monday through Friday, excluding holidays.

Before calling for support, please ensure that you have loaded and tested operation using the included demonstration program and touchpanel(s) to ensure that you understand the correct operation of the module. It may be difficult for ControlWorks to provide support until the demonstration program is loaded.

Updates, when available, are automatically distributed via Email notification to the address entered when the module was purchased. In addition, updates may be obtained using your username and password at <http://www.thecontrolworks.com/customerlogin.aspx>.

Distribution Package Contents

The distribution package for this module should include:

eSommelier_v6.umc.....	Crestron User Module
esommelier v6.usp	SIMPL+ file used within the main module
esommelier v6.ush	SIMPL+ header file
utf-8_processor_v1.usp	SIMPL+ file used within the main module
utf-8_processor_v1.ush	SIMPL+ header file
eSommelier Xpanel V6.vtp	Demo touchpanel for Xpanel
eSommelier TPS6000 V6.vtp	Demo touchpanel for a TPS-6000
eSommelier Test v6.smw	Demo program for PRO2 processor
eSommelier_Module_Help_v6.pdf.....	This help file

Unsupported features of the eSommelier Server

- Delete a wine from the database
- Add a wine to the database
- Editing notes for a wine
- Add functions for the bin number

Revision History

V6 bob@controlworks.com 2009.02.02

Added: rating\$[1]-[7] outputs to match graphics in table on main page.

V5 bob@controlworks.com

Skipped rev to match revision of simpl+ code for uniformity.

V4 bob@controlworks.com 2007.09.18

Added: Status retrieval for sw version, update info, s/n, temp/humidity info, and bottle types/counts.

V3 bob@controlworks.com 2006.10.26

Added: Index alpha speed key search

Added: Search (find) QWERTY functionality

Added: Added edit on details page for rating, drink, wish list and price

Added: Added wine edit capability for country, region, variety and vintage

Added: UTF character support

Updated: Bottle/location information display

Updated: Graphics

V2 bob@controlworks.com 2005.09.09

Added: Wine type feedback for bottle icon

Added: Logic to auto select countries on reset

Added: additional line for ripeness output

Fixed: Max string size for wine info

V1 bob@controlworks.com 2004.09.22

Initial release

Development Environment

Version 6 of this module was developed on the following hardware and software. Different versions of hardware or software may or may not operate properly. If you have questions, please contact us.

Hardware

Crestron PRO2 Processor v3.155.1240

Software

Crestron SIMPL Windows Version 2.08.41

Crestron Vision Tools Pro-e Version 3.7.2.1

Crestron Database Version 18.8.8

Crestron Symbol Library Version 487

Crestron Device Library Version 487

ControlWorks Consulting, LLC Software License Agreement

Definition

Software refers to all files provided as a part of a project for use with Crestron hardware including, but not limited to: all network devices, CNX generation platforms, 2-series platforms, Ethernet devices and the Crestron line of wired and wireless Touchpanels, as well as any future hardware that may support the use of these files.

Disclaimer of Warranties

ControlWorks Consulting, LLC software is licensed to you as is. You, the consumer, bear the entire risk relating to the quality and performance of the software. In no event will ControlWorks Consulting, LLC be liable for direct, indirect, incidental or consequential damages resulting from any defect in the software, even if ControlWorks Consulting, LLC had reason to know of the possibility of such damage. If the software proves to have defects, you and not ControlWorks Consulting, LLC, assume the cost of any necessary service or repair.

Modification of Software

In no event will ControlWorks Consulting, LLC be liable for direct, indirect, incidental or consequential damages resulting from you editing the software in any manner. You may not reverse engineer, modify, translate, disassemble, or de-compile this software in whole or part.

License Grant

This software is the intellectual property of ControlWorks Consulting, LLC and is protected by law, including United States copyright laws. This license grant is for use only in your client's installations and may not be transferred to other persons, organizations, other Crestron dealers or Crestron end users.

The use of this software indicates acceptance of these terms.